

COMMERCE PARK ON PARMER LANE

ANOTHER FINE GALESİ GROUP DEVELOPMENT

Retail Sites

Significant Facts

Price	\$ 7.50 per square foot*	
Size	4 sites available: 2.5, 7.13, 9.45, 18.63	
Zoning	"LR", allows for .25:1 FAR	
Location	In the City of Austin with frontage on Parmer Lane, East of Harris Branch Parkway. <ul style="list-style-type: none">- 12 minutes to downtown- 12 minutes to Austin-Bergstrom Airport- 1 minute to Samsung- 1 minute to Applied Materials	
Utilities	Gas	Texas Gas Service
	Electricity	Bluebonnet Electric Coop
	Water & Wastewater	City of Austin
Other	Deed Restricted, Commercial Owner's Association 1,300 homes within walking distance	

*prices subject to change without notice



GALESİ-AUSTIN

Contact Information

John McCullough, Broker
JLM Land Company
1010 Rio Grande Street, Suite B
Austin, Texas 78701
jlmilandco@galesi-austin.com
512.419.7600 Fax 512.419.9505



All information regarding this property is from sources deemed reliable; however JLM Land Company has not made an independent investigation of the information or its sources and no warranty or representation is made by JLM Land Company or anyone associated with JLM Land Company as to the accuracy of the information. The property information is subject to errors, omissions, change of price, rental or other conditions, prior sale, lease or withdrawal from market without notice. JLM Land Company further has made and shall not make any warranty or representation as to the condition of any property referred to herein, or the laws, regulations, or ordinances that affect such property, nor the presence of any hazardous substances or any environmental or other conditions that may affect such property, including the value of such property or its suitability for any use.



SH 130

Titanium Street

Silicon Drive

Harris Branch Parkway

Parmer Lane

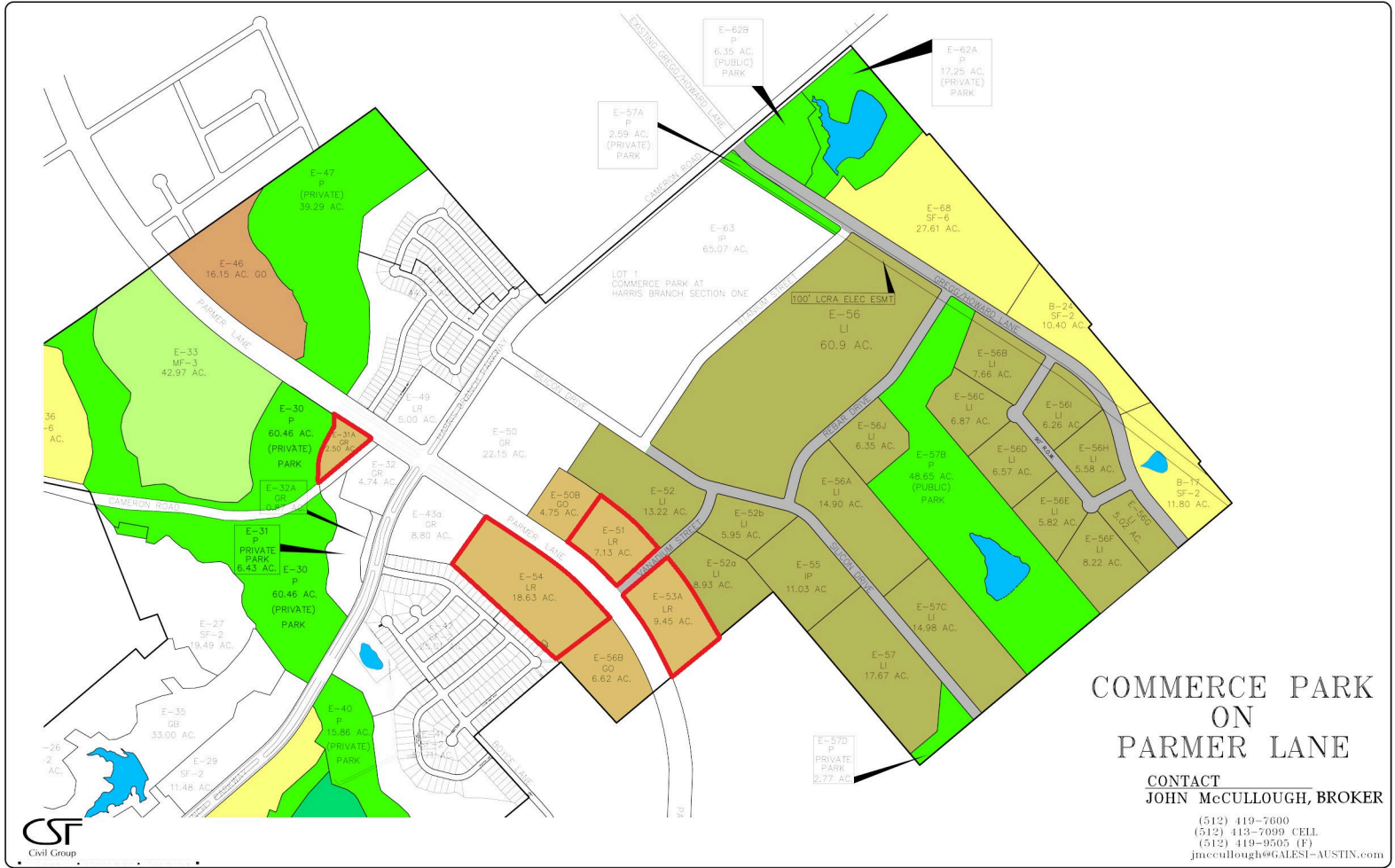
Cameron Road

2.50 ACRES
GR

7.13 ACRES
LR

9.45 ACRES
LR

18.63 ACRES
LR



COMMERCE PARK ON PARMER LANE

CONTACT
JOHN McCULLOUGH, BROKER

(512) 419-7600
 (512) 413-7099 CELL
 (512) 419-9505 (F)
jmccullough@GALES1-AUSTIN.com

