

# HARRIS BRANCH

ANOTHER FINE GALESI GROUP DEVELOPMENT

## Single Family Tract

### Significant Facts

<b>Price</b>	\$25,000 per acre "as is"	
<b>Size</b>	32.5 acres	
<b>Location</b>	Parmer Lane near Harris Branch Parkway, in the City of Austin <ul style="list-style-type: none"><li>- 12 minutes to Austin-Bergstrom Airport</li><li>- 12 minutes to downtown</li><li>- 2 minutes to SH-130</li><li>- 1 minutes to Samsung</li><li>- 1 minute to Applied Materials</li></ul>	
<b>Zoning</b>	SF-6, 40 foot lots	
<b>Utilities</b>	Electricity	Austin Energy
	Water & Wastewater	City of Austin
<b>Streets</b>	Asphalt	
<b>Schools</b>	Manor ISD	
<b>Other</b>	Deed restricted; Commercial Owners Association	

\*prices subject to change without notice



## GALESI-AUSTIN

### Contact Information

John McCullough, Broker  
JLM Land Company  
1010 Rio Grande Street, Suite B  
Austin, Texas 78701  
jmccullough@galesi-austin.com  
512.419.7600 Fax 512.419.9505



All information regarding this property is from sources deemed reliable; however JLM Land Company has not made an independent investigation of the information or its sources and no warranty or representation is made by JLM Land Company or anyone associated with JLM Land Company as to the accuracy of the information. The property information is subject to errors, omissions, change of price, rental or other conditions, prior sale, lease or withdrawal from market without notice. JLM Land Company further has made and shall not make any warranty or representation as to the condition of any property referred to herein, or the laws, regulations, or ordinances that affect such property, nor the presence of any hazardous substances or any environmental or other conditions that may affect such property, including the value of such property or its suitability for any use.

SAMSUNG

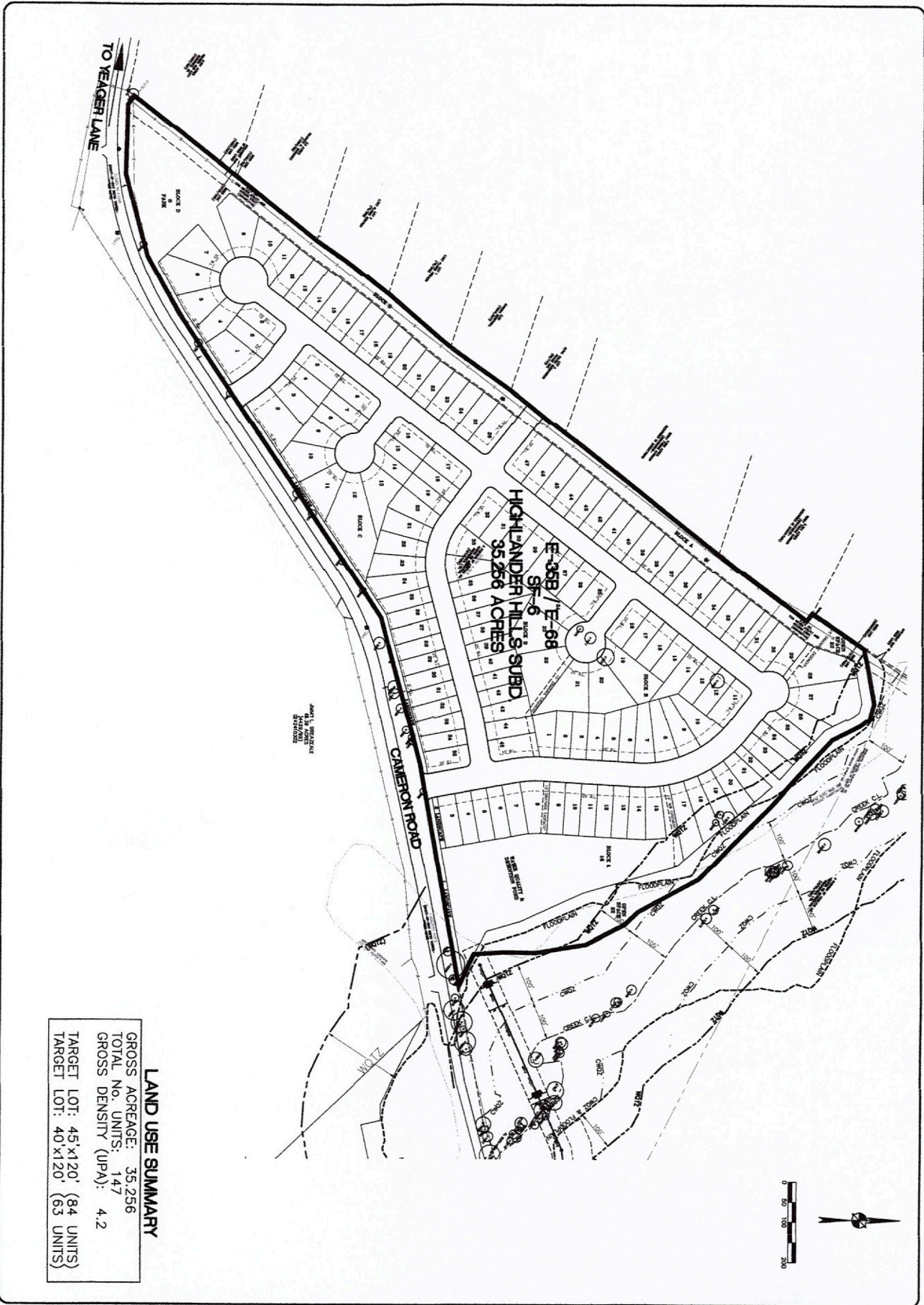
Parmer Lane

Yager Lane

32.57 ACRES  
SF-6

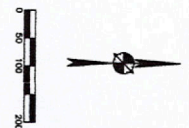
Cameron Road

John McCullough, Broker  
JLM Land Company  
2011



**LAND USE SUMMARY**

GROSS ACREAGE:	35.256
TOTAL NO. UNITS:	147
GROSS DENSITY (UPA):	4.2
TARGET LOT: 45'x120'	(84 UNITS)
TARGET LOT: 40'x120'	(63 UNITS)



1  
SHEET

**HARRIS BRANCH**  
AUSTIN HD RESIDENTIAL PROPERTIES, LTD

HARRIS BRANCH  
HIGHLANDER HILLS SUBDIVISION  
BASEMAP

**Stanley Consultants INC.**  
6530 Austin Center Blvd, Suite 300 Austin, TX 78731  
www.stanleyconsultants.com

John McCullough, Broker  
JLM Land Company